

1



2



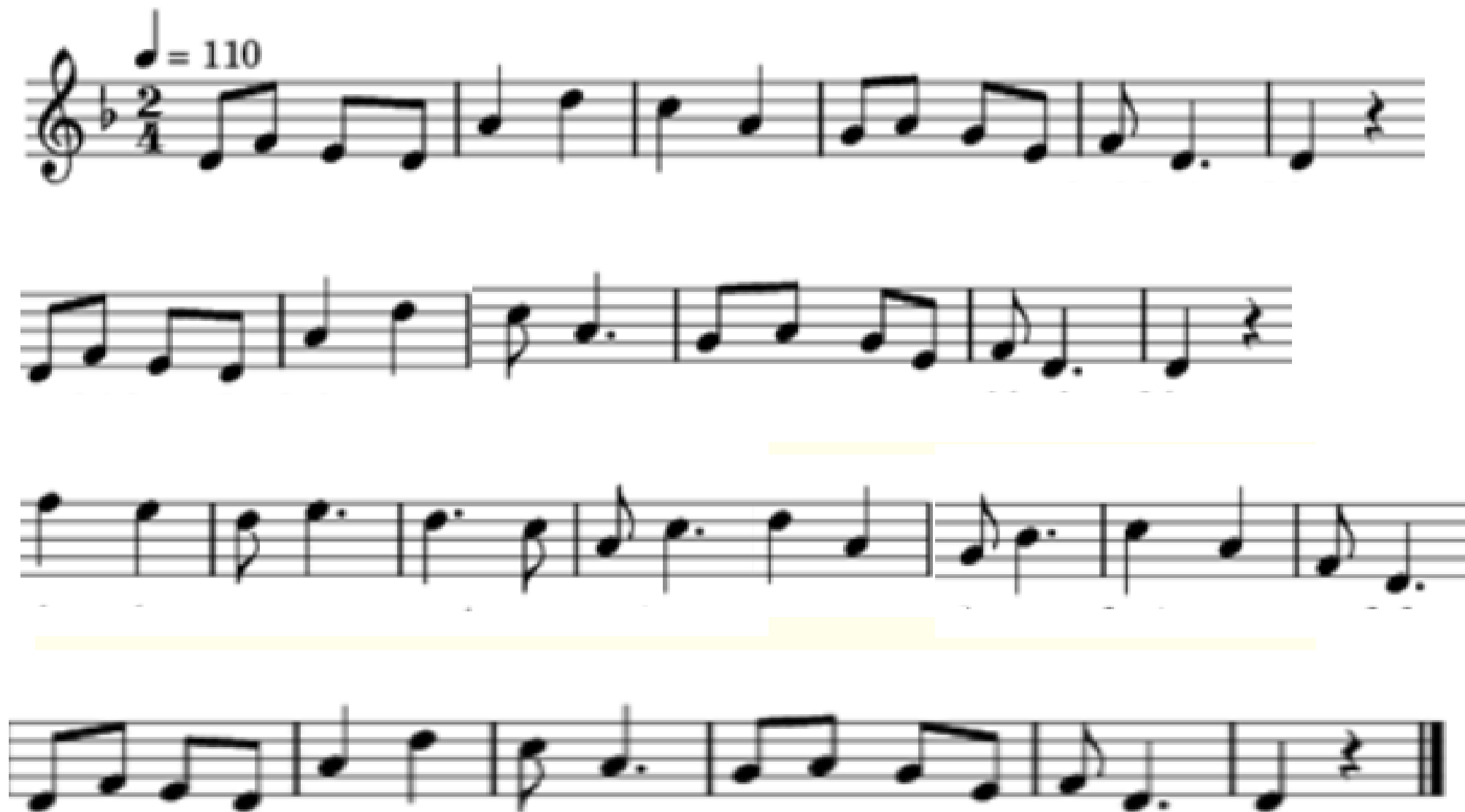
3



4



5



6



7

The first staff of music contains a sequence of notes: a quarter note G4, an eighth note A4, a quarter note B4, a quarter note C5, a quarter note B4, a quarter note A4, a quarter note G4, a quarter note F#4, a quarter note E4, a quarter note D4, a quarter note C4, and a quarter note B3. The notes are written on a five-line staff with a treble clef.

The first staff of music contains the following notes and rests: a quarter note G4, an eighth note A4, an eighth note B4, a quarter note C5, a quarter note B4, a quarter note A4, a quarter note G4, a quarter note F#4, a quarter note E4, a quarter note D4, a quarter note C4, and a quarter rest.

The first staff of music contains a sequence of notes: a quarter note (G4), an eighth note (A4), a quarter note (B4), an eighth note (C5), a quarter note (B4), an eighth note (A4), a quarter note (G4), and a half note (F#4). The staff ends with a double bar line.

8





9



10



11



12



13

*Vésző (Békés m.) Bartók B.*



14



15

Tempo giusto



16





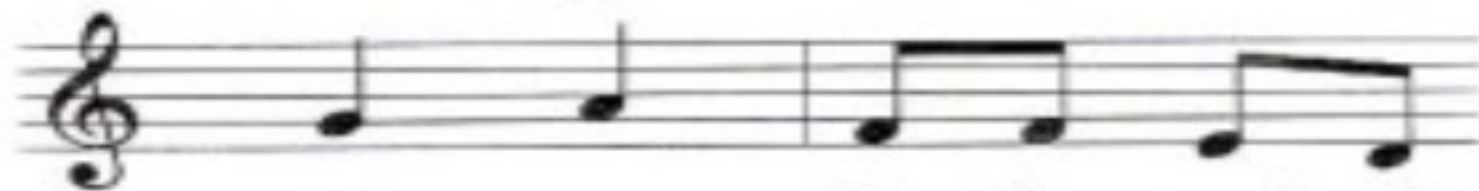
17



18



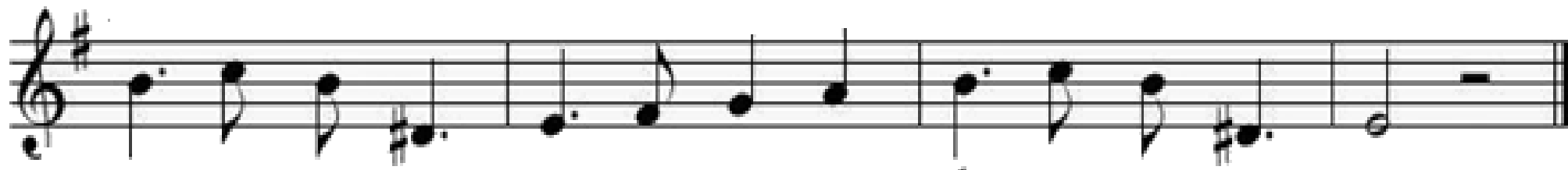
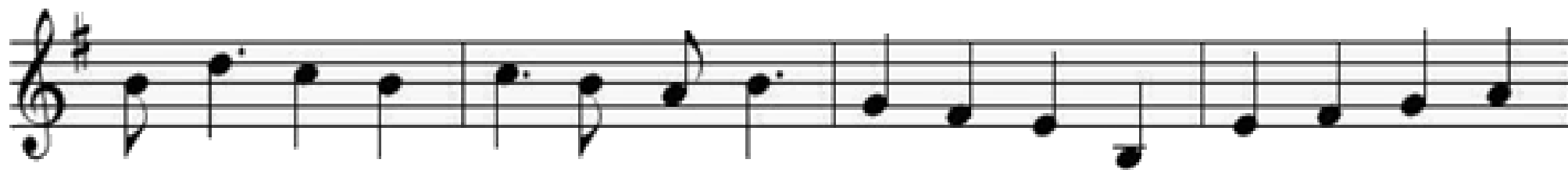
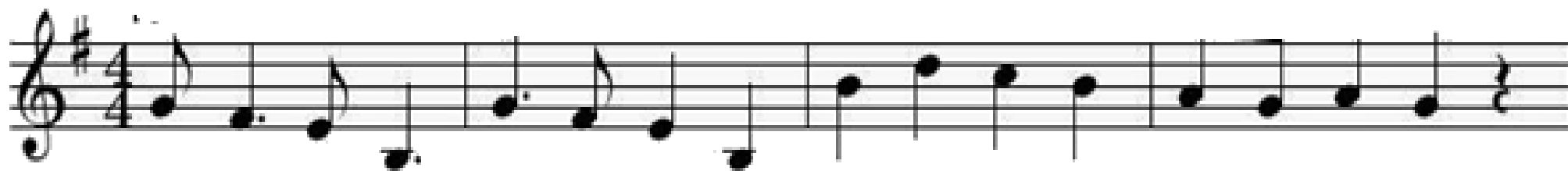
19



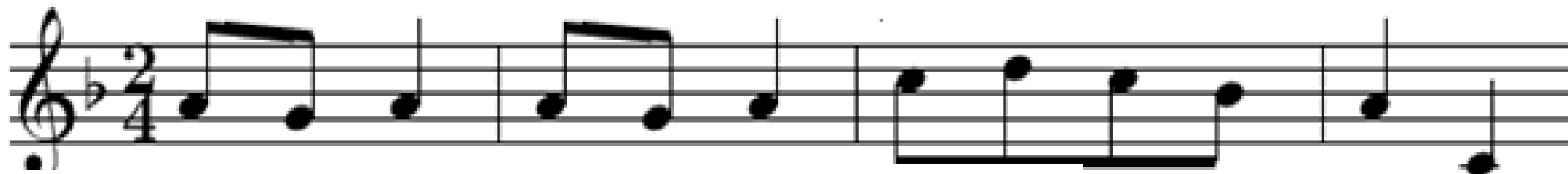
20



21



22



23



24

♩ = 100

3

6

9



25





27



28

sz nepdai

The image displays a musical score for four staves, all in 4/4 time. The first staff begins with a treble clef, a 4/4 time signature, and a key signature of one sharp (F#). It contains a melody starting on a half note G4, followed by quarter notes A4, B4, and C5, then a descending eighth-note pair (B4, A4), and ending with a half note G4. The second and third staves provide accompaniment, each starting with a treble clef and a key signature of one sharp. They feature a steady quarter-note bass line (G4, A4, B4, C5) and a melody of eighth notes (G4, A4, B4, C5, B4, A4, G4). The fourth staff continues the melody from the first staff, ending with a double bar line. The word 'sz' is written above the first staff, and 'nepdai' is written above the second staff.

29



30

